



STAFF REPORT

TO: City Council
FROM: City Manager
FOR MEETING: Jul 27 2021

SUBJECT: Redistricting Process Required By State Law.

RECOMMENDATION:

The City Council hold a Public Hearing regarding the state mandated redistricting process, pursuant to Elections Code Sections 21607 and 21607.1.

ORDER OF PROCEDURE:

Request Staff Report (City Manager Presenting)
Council Questions of Staff Request
Open the Public Hearing
Receive Public Comment
Close the Public Hearing
Council Discussion
Motion/Second
Discussion of Motion
Call the Question

ATTACHMENTS:

- [City of Twentynine Palms Introduction to Redistricting 2021](#)

BACKGROUND:

Following the results of each decennial census, the Elections Code requires the City to hold at least four Public Hearings, of which this is the first, to discuss the results of the census and its potential impact on the City's district voting map. (Elec. Codes §§ 21607; 21607.1(a)).

DISCUSSION:

The Elections Code requires that two public hearings occur prior to the preparation of draft maps. Then, two Public Hearings must occur after the draft or proposed maps for redistricting exist. A variety of criteria exist for creating districts, which generally speaking, already apply to the City's existing districts. The two criteria of most relevance to the current redistricting process will be the requirement that the population of each district is "balanced" meaning relatively the same, and the requirement that to the extent practicable the districts be contiguous.

In terms of balancing, the law requires that the districts each have relatively the same population with a deviation of not more than 10%. Until final census numbers exist, it will not be possible to determine if the City's existing districts will continue to meet this requirement, or if adjustments are required. As to the issue of being "contiguous," as currently structured the districts do not meet this requirement in the manner in which it is defined in the Elections Code. The reason for this is the unique nature of the Marine Base and a variety of relevant issues which staff believes makes it not practicable to meet the contiguous standard. We will present information on this during the Public Hearing and continue to evaluate this element as we gather public input during the process.

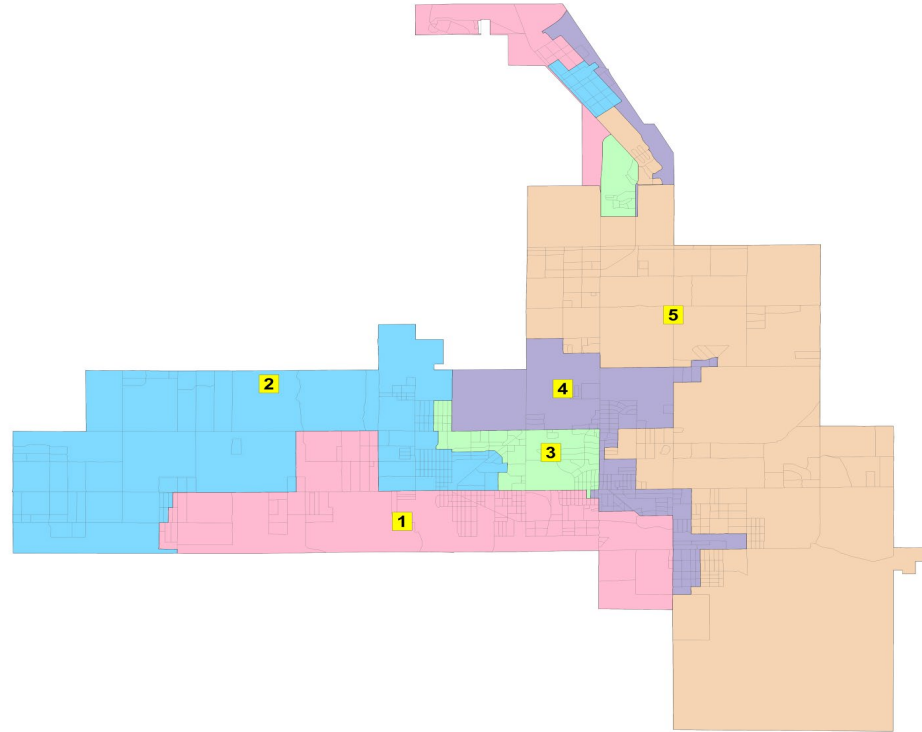
Attached is a presentation from National Demographics Corporation (NDC) that outlines the redistricting process, which will be presented by Todd Tatum of NDC. The results of the 2020 census are not out yet, but NDC will present data based on preliminary data which is available. As will be explained, minimal changes, if any, to the City's districting maps are anticipated, as the population has not significantly changed since 2010. Once final census data is available, it will be possible to determine if the districts have become unbalanced and need to be adjusted. The census data is expected to be available before the third public hearing, in time to be considered when draft or proposed maps are prepared. At this time, and at the next Public Hearing, public input will be collected to be included in the preparation of draft or proposed maps.

ALTERNATIVES:

N/A

FISCAL IMPACT:

N/A



City of Twentynine Palms

Introduction to Redistricting 2021

7/27/2021

Todd Tatum

National Demographics Corporation

Redistricting Process

Step	Description
Two Initial Hearings July 27 & TBD	Held prior to release of draft maps. Education and to solicit input on the communities in the Districts.
Census Data Release Mid/Late August	Census Bureau releases official 2020 Census population data.
California Data Release Early October 2021	California Statewide Database releases California's official 'prisoner-adjusted' 2020 redistricting data.
Two Draft Map Hearings TBD & TBD	Two Public Hearings to discuss and revise the draft maps and to discuss the election sequence.
Map Adoption By April 17, 2022	Final map must be posted at least 7 days prior to adoption. Map adopted via ordinance.*

Redistricting Rules and Goals

1. Federal Laws

Equal Population
Federal Voting Rights Act
No Racial Gerrymandering



2. California Criteria for Cities (rank ordered)

1. Geographically contiguous
2. Undivided neighborhoods and “communities of interest”
(Socio-economic geographic areas that should be kept together)
3. Easily identifiable boundaries
4. Compact
(Do not bypass one group of people to get to a more distant group of people)

Prohibited:

“Shall not favor or discriminate against a political party.”

3. Other Traditional Redistricting Principles

Minimize voters shifted to different election years
Respect voters’ choices / continuity in office
Future population growth
Preserving the core of existing districts

Demographic Summary of Existing Districts

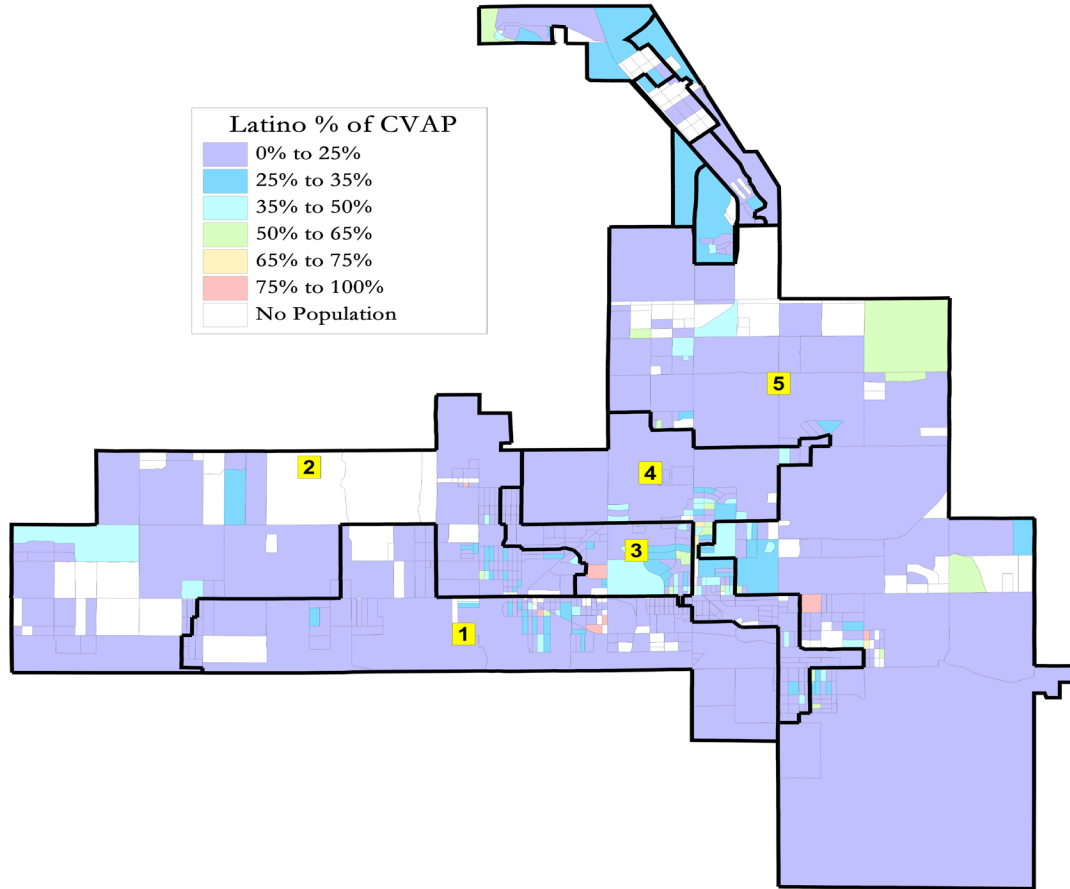
Twentynine Palms - Current Council Districts							
Category	Field	1	2	3	4	5	Count
2020 Est. Population	2020 Estimated Pop.	5,529	4,974	4,843	5,233	5,228	25,808
	Estimated Deviation	-923	-1,478	-1,609	-1,219	-1,224	686
	Est. Pct. Deviation	-14.30%	-22.91%	-24.93%	-18.89%	-18.97%	10.63%
Citizen Voting Age Pop	Total	3,868	3,988	3,312	3,942	3,204	3,828
	Hisp	18%	19%	22%	21%	26%	21%
	NH White	66%	66%	55%	57%	55%	60%
	NH Black	8%	6%	12%	13%	12%	10%
	Asian/Pac.Isl.	6%	8%	9%	6%	6%	7%

Estimates using official 2020 demographic data and NDC's estimated total population figures.

Each of the 5 districts must contain about 5,100 people.

Latino CVAP

There is some concentration of Latinos, African-Americans, Asian-Americans, or Native Americans



Defining Neighborhoods

1st Question: What is your neighborhood?

2nd Question: What are its geographic boundaries?

Examples of physical features defining a neighborhood boundary:

- Natural neighborhood dividing lines, such as highway or major roads, rivers, canals and/or hills
- Areas around parks or schools
- Other neighborhood landmarks

In the absence of public testimony, planning records and other similar documents may provide definition.



Beyond Neighborhoods: Defining Communities of Interest

1st Question: What defines your community?

- Geographic Area, plus
- Shared issue or characteristic
 - Shared social or economic interest
 - Impacted by county policies
- Tell us “your community’s story”

2nd Question: Would this community benefit from being “included within a single district for purposes of its effective and fair representation”?

- Or would it benefit more from having multiple representatives?

Definitions of Communities of Interest may not include relationships with political parties, incumbents, or political candidates.

Beyond Neighborhoods: Communities

Under the California Elections Code, “community of interest” has a very specific definition in the context of districting and redistricting cities and counties:

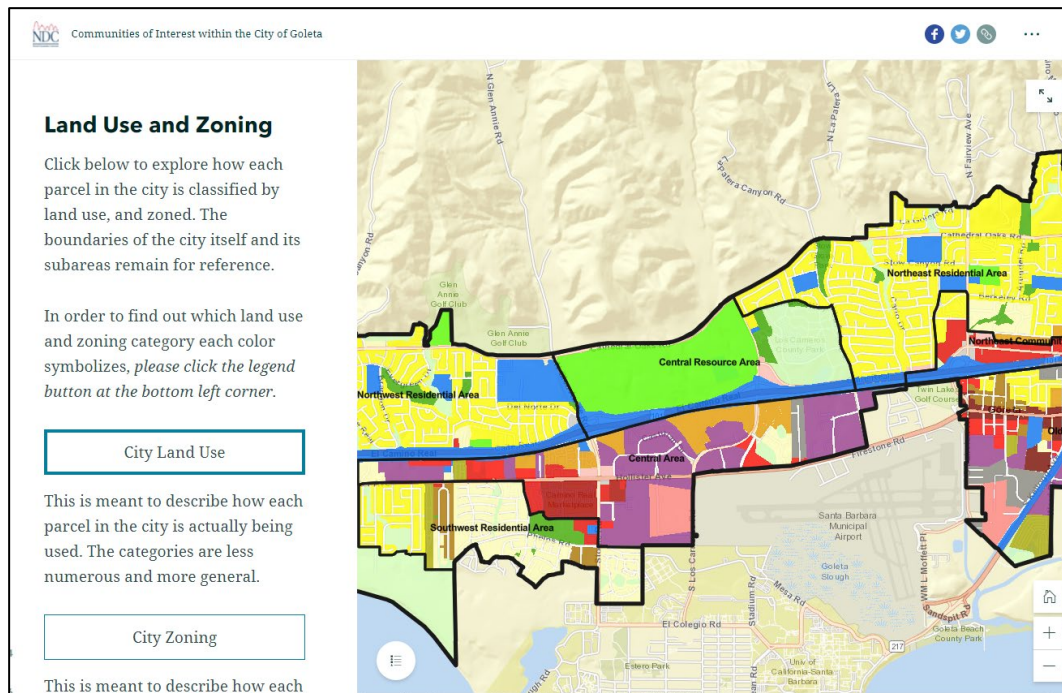
A “community of interest” is a population that shares common social or economic interests that should be included within a single district for purposes of its effective and fair representation.

Communities of interest do not include relationships with political parties, incumbents, or political candidates.

(emphasis added)

Story Map

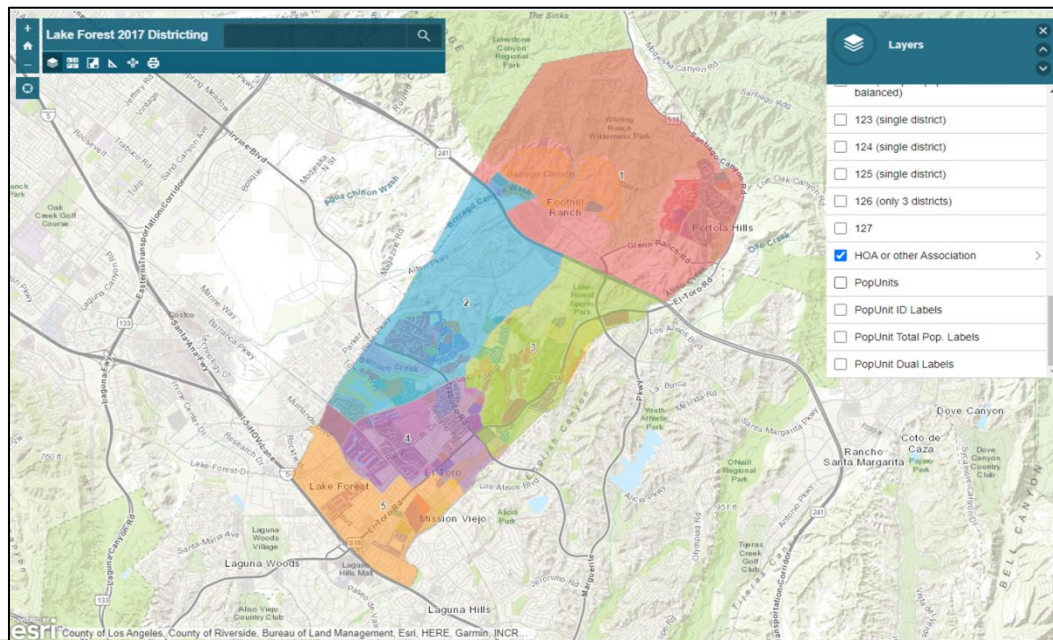
- Easy to use “story” of demographic and other data
 - Similar to PowerPoint, but interactive
 - Used to identify “communities of interest”
 - Sample map from Goleta



Simple Map Review Tool

Online Interactive Review Map

- ESRI's "ArcGIS Online" – similar to Google Maps in ease of use
- Used to review, analyze and compare maps, not to create them
- Includes overlays of "community of interest" and other data



Public Hearing & Discussion

What is your neighborhood and what are its boundaries?

What other notable areas are in the City, and what are their boundaries?

